

**National Interagency Coordination Center
Incident Management Situation Report
Saturday, August 27, 2011 – 0530 MT
National Preparedness Level 3**

National Fire Activity

Initial attack activity:	Heavy (664 new fires)
New large fires:	14 (*)
Large fires contained:	6
Uncontained large fires: **	40
Area Command Teams committed:	0
NIMOs committed:	0
Type 1 IMTs committed:	1
Type 2 IMTs committed:	10

Nationally, there are 51 large fires being managed to achieve multiple objectives.

** Uncontained large fires include only fires being managed under a full suppression strategy.

[Link](#) to Geographic Area daily reports.

A Type 1 Incident Management Team (Giachino) is assigned to establish and manage a mobilization center at East Farmingdale, New York in response to Hurricane Irene.

Northern Rockies Area (PL 3)

New fires:	24
New large fires:	1
Uncontained large fires:	6
Type 2 IMTs committed:	4

West Riverside, Montana DNR. IMT 2 (Grant). Twelve miles southeast of Missoula, MT. Timber. No new information.

Diamond Complex, Miles City Field Office, BLM. IMT 2 (Heintz). Twenty-nine miles south of Ashland, MT. Timber. Active fire behavior. Structures threatened.

Black Springs Complex, (two fires) Northern Cheyenne Agency, BIA. IMT 2 (Benes). Six miles west of Lame Deer, MT. Timber. Moderate fire behavior.

Saddle Complex – Bitterroot Branch, Bitterroot NF. IMT 2 (Hutton). Thirty miles southwest of Darby, MT. Timber. Reduced acres show only those involved on the Bitterroot Branch of this fire. Moderate fire activity. Structures threatened. Evacuations in effect.

Mill, Custer NF. Twenty miles northeast of Ashland, MT. Timber and brush. No new information.

* **Elk Park**, Lewis and Clark NF. Twenty-two miles northwest of Sulphur Springs, MT. Grass. Running, torching and spotting.

Incident Name	St	Unit	Size	Size Chge 24 Hrs	% Ctn	Est Ctn	Totl Pers	Pers Chge 24 Hrs	Crw	Eng	Heli	Strc Lost	\$\$ CTD	Origin Own
West Riverside	MT	DNR	2,100	---	25	UNK	484	---	11	19	2	0	881K	ST
Diamond Complex	MT	MCD	42,256	6,956	60	UNK	337	115	9	23	1	3	754K	BLM
Black Springs Complex	MT	NCA	24,570	0	80	8/29	438	-36	10	25	4	0	1.3M	BIA
Saddle Complex-Bitterroot Branch	MT	BRF	11,992	-10,105	N/A	N/A	143	24	3	12	3	0	300K	FS
Mill	MT	CNF	6,500	---	30	UNK	213	---	8	3	2	0	50K	FS
* Elk Park	MT	LCF	600	---	0	UNK	93	---	4	4	0	0	125K	FS

Rocky Mountain Area (PL 3)

New fires: 36
New large fires: 7
Uncontained large fires: 8
Type 2 IMTs committed: 1

Hole in the Wall, Shoshone NF. South Dakota IMT 2 (Lowe). Seven miles west of Clark, WY. Timber. Torching and spotting. Residences threatened.

* **Thompson**, Niobrara County. Twenty miles northwest of Lance Creek, WY. Grass. Running and creeping.

* **Cheyenne River**, Niobrara County. Thirty miles south of Newcastle, WY. Grass. Running and creeping.

Rourke, High Plains District, BLM. Fifteen miles north of Gillette, WY. Timber and grass. Smoldering and creeping.

Wild Stallion, Pine Ridge Agency, BIA. Ten miles west of Pine Ridge, SD. Timber and grass. Minimal fire activity.

* **Manning**, Converse County. Eighteen miles west of Lance Creek, WY. Grass. No further information received.

Sambrito 2, Southern Ute Agency, BIA. Eight miles east of Ignacio, CO. Timber. Creeping and torching.

Paintrock, Wind River/Big Horn Basin District, BLM. Twenty miles northeast of Worland, WY. Chaparral. Torching, smoldering and creeping.

* **South Pennock**, Rawlins District, BLM. Five miles east of Saratoga, WY. Brush and grass. Smoldering and creeping.

Incident Name	St	Unit	Size	Size Chge 24 Hrs	% Ctn	Est Ctn	Totl Pers	Pers Chge 24 Hrs	Crw	Eng	Heli	Strc Lost	\$\$ CTD	Origin Own
Hole in the Wall	WY	SHF	6,185	421	N/A	N/A	436	205	12	11	8	0	900K	FS
* Thompson	WY	NIX	6,842	---	60	UNK	14	---	0	3	0	0	NR	CNTY

* Cheyenne River	WY	NIX	5,000	---	30	UNK	49	---	1	8	0	0	NR	CNTY
Rourke	WY	HPD	4,212	0	80	8/27	90	-17	2	10	1	0	1M	BLM
Wild Stallion	SD	PRA	2,510	0	90	8/27	15	-17	0	5	0	2	208K	BIA
* Manning	WY	COX	2,500	---	15	UNK	20	---	1	0	1	0	NR	CNTY
Sambrito 2	CO	SUA	477	6	15	8/29	134	60	5	5	2	0	428K	BIA
Paintrock	WY	WBD	412	12	50	8/27	50	20	1	1	1	0	30K	BLM
* South Pennock	WY	RAD	374	---	80	UNK	47	---	1	3	0	0	20K	BLM
* North Fork	NE	NBF	486	---	100	---	8	---	0	4	0	0	NR	FS
* Naw Dog	SD	PRA	475	---	100	---	29	---	0	12	0	0	9K	BIA
* Thompson	SD	SDS	365	---	100	---	50	---	0	14	0	0	NR	ST

NBF – Nebraska NF SDS – South Dakota Wildland Fire Suppression

Northwest Area (PL 2)

New fires: 106
 New large fires: 3
 Uncontained large fires: 17
 Type 2 IMTs committed: 2

* **High Cascades Complex** (three fires), Warm Springs Agency, BIA. IMT 2 (Fillis). Warm Springs Reservation. Timber, Grass, brush. Active fire behavior. Structures threatened.

Hancock Complex, (seven fires) Prineville District, BLM. IMT 2 (Rapp). Two miles northeast of Clarno, OR. Grass. Active fire behavior.

West Little, Vale District, BLM. Forty-five miles northeast of McDermitt, OR. Brush. Running fire.

Webster, Warm Springs Agency, BIA. Four miles northeast of Warm Springs, OR. Grass. Smoldering.

Smyth Creek, Burns District, BLM. Fifteen miles south of Diamond, OR. Timber and grass. Moderate fire activity.

DSL Complex, Burns District, BLM. Sixty miles southeast of Burns, OR. Brush. Active fire behavior.

Desert Meadows, Burns District, BLM. Fifteen miles south of Frenchglen, OR. Brush and grass. Running and spotting. Residences threatened.

* **Lauserica**, Burns District, BLM. Twenty miles northwest of Fields, OR. Brush. Active fire behavior.

* **Incident 615**, Prineville District, BLM. Three miles southeast of Twickingham, OR. Grass. Moderate fire activity.

Incident Name	St	Unit	Size	Size Chge 24 Hrs	% Ctn	Est Ctn	Totl Pers	Pers Chge 24 Hrs	Crw	Eng	Heli	Strc Lost	\$\$ CTD	Origin Own
* High Cascades Complex	OR	WSA	7,239	---	10	9/5	145	---	5	20	0	0	52K	BIA

Hancock Complex	OR	PRD	18,000	4,874	50	UNK	282	144	6	18	2	0	460K	BLM
DSL Complex	OR	BUD	6,964	5,919	45	8/28	128	97	4	11	0	0	19K	BLM
West Little	OR	VAD	4,400	1,900	0	8/29	105	0	1	15	4	0	225K	BLM
Smyth Creek	OR	BUD	1,600	100	37	8/30	72	0	2	11	0	0	90K	BLM
Webster	OR	WSA	1,500	0	40	UNK	2	-3	0	1	0	0	10K	BIA
Desert Meadows	OR	BUD	1,500	900	37	9/15	50	30	1	5	1	0	75K	BLM
* Lauserica	OR	BUD	800	---	0	9/1	4	---	0	0	0	0	25K	BLM
* Incident 615	OR	PRD	600	---	40	UNK	6	---	0	1	0	0	2K	BLM
Vines Hill	OR	VAD	1,230	730	100	---	43	-22	0	10	0	0	90K	BLM

Southern Area (PL 3)

New fires: 281
New large fires: 0
Uncontained large fires: 2
Type 2 IMTs committed: 1

Lateral West, Great Dismal Swamp NWR. IMT 2 (Dueitt). Nine miles southeast of Suffolk, VA. Timber. No new information.

JA Ranch, Texas Forest Service. Eighteen miles southeast of Claude, TX. Grass. Active fire behavior.

Incident Name	St	Unit	Size	Size Chge 24 Hrs	% Ctn	Est Ctn	Totl Pers	Pers Chge 24 Hrs	Crw	Eng	Heli	Strc Lost	\$\$ CTD	Origin Own
Lateral West	VA	GDR	6,538	---	35	UNK	402	---	5	29	5	0	7.5M	FWS
JA Ranch	TX	TXS	1,200	0	80	UNK	58	65	0	7	0	0	NR	ST
Bone Dry	TX	TXS	1,000	350	100	---	20	0	0	2	0	0	NR	ST

Southern California Area (PL 2)

New fires: 130
New large fires: 0
Uncontained large fires: 1
Type 2 IMTs committed: 1

Motor, Sierra NF. IMT 2 (Cooper). Thirteen miles northeast of Mariposa, CA. Chaparral. Active fire behavior. Structures threatened. Evacuations in effect.

Incident Name	St	Unit	Size	Size Chge 24 Hrs	% Ctn	Est Ctn	Totl Pers	Pers Chge 24 Hrs	Crw	Eng	Heli	Strc Lost	\$\$ CTD	Origin Own
Motor	CA	SNF	2,300	1,400	0	9/9	1,129	865	18	113	9	0	200K	FS

Eastern Great Basin Area (PL 3)

New fires: 32
 New large fires: 1
 Uncontained large fires: 2
 Type 2 IMTs committed: 1

* **Salt**, Salmon-Challis NF. IMT 2 (Sommer). Sixteen miles southwest of Salmon, ID. Timber. Running, spotting and torching.

T17, Idaho National Laboratory, DOE. Twenty-six mile east of Arco, ID. Brush and grass. Active fire behavior.

Saddle Complex, Salmon-Challis NF. Twenty-two miles northwest of North Fork, ID. Timber. Short runs with torching.

Incident Name	St	Unit	Size	Size Chge 24 Hrs	% Ctn	Est Ctn	Totl Pers	Pers Chge 24 Hrs	Crw	Eng	Heli	Strc Lost	\$\$ CTD	Origin Own
* Salt	ID	SCF	350	---	0	UNK	65	---	2	1	4	0	45K	FS
T17	ID	INE	51,200	26,200	90	8/27	65	31	0	10	1	0	350K	DOE
Saddle Complex	ID	SCF	10,754	1	N/A	N/A	55	0	2	1	0	0	324K	FS

Western Great Basin Area (PL 3)

New fires: 2
 New large fires: 2
 Uncontained large fires: 3

Jumbo, Ely District, BLM. Fifty-three miles northeast of Mesquite, NV. Grass. Creeping and smoldering.

* **Silverbell**, Winnemucca District, BLM. Twenty miles northwest of Gerlach, NV. Timber. Running, torching and spotting.

* **Toano**, Northern Region , Nevada DOF. Thirty-seven miles west of Wells, NV. Grass. Active fire behavior.

Incident Name	St	Unit	Size	Size Chge 24 Hrs	% Ctn	Est Ctn	Totl Pers	Pers Chge 24 Hrs	Crw	Eng	Heli	Strc Lost	\$\$ CTD	Origin Own
Jumbo	NV	ELD	1,715	1,114	50	8/28	143	101	5	4	1	0	200K	BLM
* Silverbell	NV	WID	450	---	20	8/28	149	---	5	2	6	0	300K	BLM
* Toano	NV	NNS	300	---	30	8/27	57	---	2	2	1	0	NR	ST
Great Stone	NV	CCD	2,377	0	100	---	3	-152	0	1	0	0	95K	BIA

CCD – Carson City District, BLM

Southwest Area (PL 2)

New fires: 18
 New large fires: 0
 Uncontained large fires: 1

Beale, Kaibab NF. Previously reported incident. Nine miles north of Parks, AZ. Timber. Smoldering. Last report unless significant activity occurs.

Catfish, Socorro Field Office, BLM. Started on Bureau of Reclamation land 28 miles southwest of San Antonio, NM. Chaparral. No new information.

Incident Name	St	Unit	Size	Size Chge 24 Hrs	% Ctn	Est Ctn	Totl Pers	Pers Chge 24 Hrs	Crw	Eng	Heli	Strc Lost	\$\$ CTD	Origin Own
Beale	AZ	KNF	5,096	---	N/A	N/A	4	---	0	1	0	0	60K	FS
Catfish	NM	SCD	350	---	20	8/31	32	---	1	2	0	0	9K	BOR

Predictive Services Discussion: Scattered thunderstorms will develop across the Southwest, central and southern Rockies and the southern Great Basin. Scattered showers and thunderstorms are expected over the Dakotas and Ohio Valley near a front. Heavy rain, thunderstorms and strong winds associated with Hurricane Irene will move into the mid-Atlantic coast states from North Carolina to Massachusetts. Conditions will remain hot across much of the West.

Predictive Services Outlook products: <http://www.predictiveservices.nifc.gov/outlooks/outlooks.htm>



Today's discussion is from
"This Day in History"

"Lessons Learned" serve as brief summaries of powerful learning opportunities. You can use these summaries as a foundation and launch point for further dialogue and discussion. Apply these lessons learned to yourself, your crew, and your unit.

Visit <https://www.iat.gov/Training/pages/online.asp> to see the DOI accident review

SEAT Accident, Meeker Colorado, August 27th 2008

Incident Summary: A Single Engine Air Tanker (SEAT) is directed by Air Attack to drop on the right flank of the Flat Bush Fire. During the first retardant drop the SEAT's flight pattern takes the aircraft in close proximity to staged firefighters and vehicles. During the drop sequence the pilot's side cockpit door comes open and forces him to abbreviate the drop. The pilot relays to Air Attack that he has a problem with his "door", and having just seen the abbreviated drop, Air Attack assumes the problem door is the retardant gate. He asks several times about the status of the pilot and aircraft. At no time did Air Attack understand that the problem was actually with the cockpit door and the pilot never fully conveys the true nature of his problem. The pilot requests to jettison the remaining retardant. Air Attack assumes the problem is corrected and asks the pilot to reinforce the previous drop. The pilot agrees with this request instead of asking to land to fix the problem. On approach for the second drop, the pilot uses an aggressive turn at low altitude to align the aircraft for the drop. The approach is directly over the top of the firefighters again. As a result of the aggressive maneuver, the aircraft stalls and crashes. Debris from the accident damages two wildland fire engines and narrowly misses the six firefighters. The aircraft's engine lands just 6 feet from an occupied vehicle. The crew is unharmed, the vehicles receive minor shrapnel damage, and although the aircraft is destroyed, the pilot only receives minor injuries.

Lessons Learned Discussion Points

Apply the concept of LCES to this incident; not from a fire perspective but an aviation point of view.

(L) Lookouts look for hazards (situations and actions) and communicate them. Aircraft flying directly overhead are a hazard. Helicopters accidentally release longlines, buckets and sling loads multiple times each season. Water and retardant drops often miss intended targets, creating the potential for injury by the drops themselves or debris from vegetation.

- What other ways can "lookouts" be utilized in aviation?

(C) If you see something wrong...say something! Communication is about being understood.

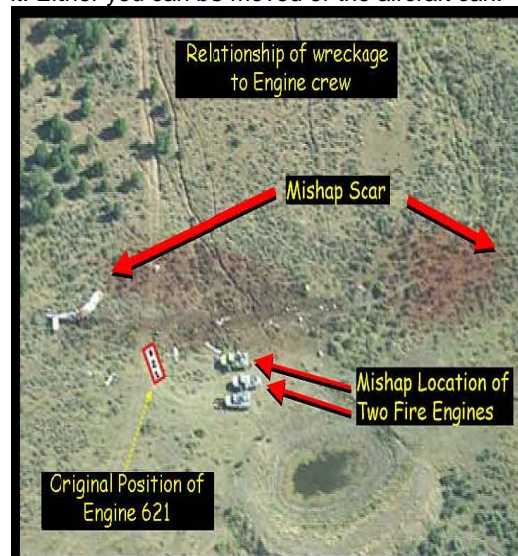
- Discuss what might have been communicated about this pilot's first drop that may have prevented the crash on the second.

Most of us have seen something that may have been unsafe but didn't say anything.

- Have your group discuss reasons why that happens. Have your group come up with one good way to avoid that dilemma and plan to practice it today.

(E & S) Just as for wildland fire, escape routes and safety zones are needed for aviation operations as well. The ground

personnel on this incident may have been in a safe location in regards to the fire but not in a safe location in relation to the aircraft. Keep in mind that if something goes wrong with an aircraft, ground crews may not have time to move to a safer location. If you are in the flight path of an aircraft, communicate it. Either you can be moved or the aircraft can.



References

- [Incident Response Pocket Guide](#)
- [Interagency Aviation Lessons Learned IALL 09-01](#)
- [BLM Operations Alert 08-01](#)

"This Day in History" is a collaborative project between ["6 Minutes for Safety"](#) and the [Wildland Fire Lessons Learned Center](#).

Fires and Acres Yesterday

AREA		BIA	BLM	FWS	NPS	ST/OT	USFS	TOTAL
Alaska	FIRES					2		2
	ACRES					0		0
Northwest	FIRES		24			2	80	106
	ACRES		10,529			12	14	10,555
Northern California	FIRES					14	2	16
	ACRES					15	6	21
Southern California	FIRES					16	114	130
	ACRES					34	14	48
Northern Rockies	FIRES	10	1			4	9	24
	ACRES	3	1			26	3,092	3,122
Eastern Great Basin	FIRES		6		1	13	12	32
	ACRES		336		0	10,411	389	11,136
Western Great Basin	FIRES		1			1		2
	ACRES		451			334		785
Southwest	FIRES	1	2		0	3	12	18
	ACRES	0	4		2	1	359	366
Rocky Mountain	FIRES	9	2	1		9	15	36
	ACRES	495	13	0		3,030	1,087	4,625
Eastern Area	FIRES					5		5
	ACRES					1		1
Southern Area	FIRES					281	12	293
	ACRES					2,940	260	3,200
TOTAL	FIRES	20	36	1	1	350	256	664
	ACRES	498	11,334	0	2	16,804	5,221	33,859

Fires and Acres Year-to-Date

AREA		BIA	BLM	FWS	NPS	ST/OT	USFS	TOTAL
Alaska	FIRES	2	26	28	17	410	7	490
	ACRES	8	47,653	36,821	8,040	199,818	1	292,341
Northwest	FIRES	192	193	8	38	323	578	1,332
	ACRES	3,725	56,470	89	4	6,593	747	67,628
Northern California	FIRES	67	11	5	13	1,435	195	1,726
	ACRES	53	2,450	4	2,178	6,638	5,436	16,759
Southern California	FIRES	18	294	5	20	2,572	304	3,213
	ACRES	224	2,486	3	1,049	34,944	22,472	61,178
Northern Rockies	FIRES	421	63	6	6	338	375	1,209
	ACRES	3,697	25,096	141	7	5,513	24,835	59,289
Eastern Great Basin	FIRES	25	467	1	9	418	321	1,241
	ACRES	2,033	246,550	26	6	45,096	21,956	315,667
Western Great Basin	FIRES	15	293	4	15	144	38	509
	ACRES	3,328	62,757	69	3	19,696	349	86,202
Southwest	FIRES	846	318	11	46	956	1,123	3,300
	ACRES	33,908	125,153	273	20,294	612,464	1,265,003	2,057,095
Rocky Mountain	FIRES	519	319	27	31	671	417	1,984
	ACRES	6,885	9,871	3,502	2,278	270,704	67,217	360,457
Eastern Area	FIRES	340		27	18	3,831	211	4,427
	ACRES	355		2,612	99	25,582	14,080	42,728
Southern Area	FIRES	811		237	70	30,643	868	32,629
	ACRES	132,978		80,320	55,690	3,123,874	34,172	3,427,034
TOTAL	FIRES	3,256	1,984	359	283	41,741	4,437	52,060
	ACRES	187,194	578,486	123,860	89,648	4,350,922	1,456,268	6,786,378

Ten Year Average Fires	56,864
Ten Year Average Acres	5,572,273

*** Changes in some agency YTD acres reflect more accurate mapping or reporting adjustments. ***

Prescribed Fires and Acres Yesterday

AREA		BIA	BLM	FWS	NPS	ST/OT	USFS	TOTAL
Alaska	FIRES							0
	ACRES							0
Northwest	FIRES							0
	ACRES							0
Northern California	FIRES						1	1
	ACRES						2	2
Southern California	FIRES							0
	ACRES							0
Northern Rockies	FIRES			1				1
	ACRES			300				300
Eastern Great Basin	FIRES							0
	ACRES							0
Western Great Basin	FIRES							0
	ACRES							0
Southwest	FIRES							0
	ACRES							0
Rocky Mountain	FIRES							0
	ACRES							0
Eastern Area	FIRES			2	1			3
	ACRES			110	50			160
Southern Area	FIRES					5		5
	ACRES					338		338
TOTAL	FIRES	0	0	3	1	5	1	10
	ACRES	0	0	410	50	338	2	800

Prescribed Fires and Acres Year-to-Date

AREA		BIA	BLM	FWS	NPS	ST/OT	USFS	TOTAL
Alaska	FIRES			1	3	12		16
	ACRES			20	35	8,513		8,568
Northwest	FIRES	8	44	7	1		122	182
	ACRES	5,268	6,885	429	42		8,661	21,285
Northern California	FIRES	15	16	21	21		141	214
	ACRES	61	655	19,513	141		5,389	25,759
Southern California	FIRES		10	10	4	15	75	114
	ACRES		756	1,963	1,060	1,960	2,090	7,829
Northern Rockies	FIRES	37	14	43	1	16	96	207
	ACRES	1,321	893	8,286	141	211	6,610	17,462
Eastern Great Basin	FIRES	0	17	3	2	35	26	83
	ACRES	54	8,572	1,023	678	712	7,038	18,077
Western Great Basin	FIRES		4	1		2	9	16
	ACRES		121	550		64	296	1,031
Southwest	FIRES	18	29	3	4		88	142
	ACRES	1,725	192,296	1,428	46		73,234	268,729
Rocky Mountain	FIRES	43	33	96	17	45	121	355
	ACRES	4,684	5,597	14,339	4,703	8,554	30,247	68,124
Eastern Area	FIRES	30		348	32	844	131	1,385
	ACRES	60,283		47,440	3,898	49,649	39,282	200,552
Southern Area	FIRES	42		140	20	1,434	556	2,192
	ACRES	7,835		74,269	13,528	305,224	454,283	855,139
TOTAL	FIRES	193	167	673	105	2,403	1,365	4,906
	ACRES	81,231	215,775	169,260	24,272	374,887	627,130	1,492,555

*** Changes in some agency YTD acres reflect more accurate mapping or reporting adjustments. ***

Additional wildfire information is available through the Geographic Areas at <http://gacc.nifc.gov/>.

Canada Fires and Hectares

PROVINCES	FIRES YESTERDAY	HECTARES YESTERDAY	FIRES YEAR-TO-DATE	HECTARES YEAR-TO-DATE
BRITISH COLUMBIA	6	28	480	11,829
YUKON TERRITORY	0	0	53	39,746
ALBERTA	1	0	958	940,041
NORTHWEST TERRITORY	1	0	203	368,277
SASKATCHEWAN	4	2	256	339,944
MANITOBA	0	0	261	84,303
ONTARIO	8	42	1,025	624,831
QUEBEC	0	0	264	12,423
NEWFOUNDLAND	1	0	45	352
NEW BRUNSWICK	1	0	70	39
NOVA SCOTIA	0	0	112	132
PRINCE EDWARD ISLAND	0	0	1	1
NATIONAL PARKS	0	0	56	84,924
TOTALS	22	73	3,784	2,506,842

This report contains information derived from the National Fire and Aviation Management Web Applications (FAMWEB) system and other sources to provide relative information about emerging and ongoing incident activity. This information is considered operational in nature, is subject to correction, and therefore may not match official year to date agency records.

**** National Interagency Coordination Center ****