

**National Interagency Coordination Center
Incident Management Situation Report
Thursday, June 2, 2011 – 0530 MT
National Preparedness Level 2**

National Fire Activity

Initial attack activity:	Light (140 new fires)
New large fires:	7 (*)
Large fires contained:	0
Uncontained large fires: **	23
Area Command Teams committed:	0
NIMOs committed:	1
Type 1 IMTs committed:	1
Type 2 IMTs committed:	7

Nationally, there are 7 large fires being managed to achieve multiple objectives.

** Uncontained large fires include only fires being managed under a full suppression strategy.

[Link](#) to Geographic Area daily reports.

Southern Area (PL 3)

New fires:	96
New large fires:	6
Uncontained large fires:	12
NIMOs committed:	1
Type 2 IMTs committed:	3

NIMO (Gage) is assigned to manage large fires and provide support to initial attack operations for the West Branch Operational Area in Texas. Texas IMT 2 (Hannemann) is managing existing and new fires located in Texas state initial attack zones.

Honey Prairie, Okefenokee NWR. Florida IMT 2 (Leneave). IMT is also managing the Race Pond fire. Five miles northeast of Fargo, GA. Southern rough. Active fire behavior.

Race Pond, Okefenokee NWR. Eleven miles south of Hoboken, GA. Southern rough. Active fire behavior. Structures threatened.

Pains Bay, Alligator River NWR. North Carolina IMT 2 (Hildreth). Nineteen miles south of Manns Harbor, NC. Timber and brush. Active fire activity. Structures threatened.

* **Friend Mountain**, Texas Forest Service. Twenty miles northwest of Fort Davis, TX. Grass. Moderate fire activity.

* **Buffalo**, Texas Forest Service. Twenty-two miles northwest of Fort Davis, TX. Grass. Moderate fire activity.

* **Rocco**, Texas Forest Service. Sixty-seven miles southwest of Fort Stockton, TX. Grass. Moderate fire activity.

Whispering Pines, Florida DOF. Twelve miles south of Christmas, FL. Southern Rough. No further information received.

Trail 3, Florida DOF. Six miles south of Indiantown, FL. Southern rough. Increase in acreage due to more accurate mapping. No further information received.

* **Gully Branch**, Florida DOF. Sixteen miles north of Eastpoint, FL. Southern rough. Moderate fire activity.

Pen Branch, Mississippi Forestry Commission. Six miles southeast of Derby, MS. Closed timber litter. No further information received.

Chainbreaker, National Forests in Mississippi. Nine miles southeast of McHenry, MS. Southern rough. Minimal fire activity.

* **Little West**, Florida DOF. Twelve miles northwest of Fort Meyers, FL. Southern rough. No further information received.

* **Larksprur**, Florida DOF. Three miles east of De Land, FL. Southern rough. No further information received.

Incident Name	St	Unit	Size	Size Chge 24 Hrs	% Ctn	Est Ctn	Totl Pers	Pers Chge 24 Hrs	Crw	Eng	Heli	Strc Lost	\$\$ CTD	Origin Own
Honey Prairie	GA	OKR	155,804	2,810	N/A	N/A	270	25	1	38	5	0	9.6M	FWS
Racepond	GA	OKR	9,194	1,339	30	UNK	121	-31	0	19	3	0	594K	FWS
Pains Bay	NC	ALR	29,479	2,093	70	UNK	222	-9	0	22	4	0	6.5M	FWS
* Friend Mountain	TX	TXS	1,800	---	0	UNK	40	---	1	3	2	0	NR	ST
* Buffalo	TX	TXS	1,640	---	95	UNK	13	---	0	2	0	0	NR	ST
* Rocco	TX	TXS	700	---	40	UNK	21	---	0	3	1	0	NR	ST
Whispering Pines	FL	FLS	1,100	150	95	UNK	7	-15	0	1	0	0	NR	ST
Trail 3	FL	FLS	1,500	700	45	UNK	7	0	0	0	0	0	NR	ST
* Gully Branch	FL	FLS	300	---	30	UNK	10	---	0	0	1	0	NR	ST
Pen Branch	MS	MSS	615	40	90	UNK	5	0	0	1	0	0	11K	ST
Chainbreaker	MS	MNF	525	0	75	6/6	6	-5	0	1	1	0	14K	FS
* Little West	FL	FLS	320	---	90	UNK	1	---	0	1	0	0	NR	ST
* Larksprur	FL	FLS	320	---	85	UNK	14	---	0	0	0	0	NR	ST

Southwest (PL 4)

New fires: 5
 New large fires: 1
 Uncontained large fires: 6
 Type 1 IMTs committed: 1
 Type 2 IMTs committed: 3

Horseshoe 2, Coronado NF. IMT 1 (Hughes). Seven miles southwest of Portal, AZ. Timber and grass. Active fire behavior. Structures threatened.

Wallow, Apache-Sitgreaves NF. IMT 2 (Philbin). Twenty-three miles southwest of Alpine, AZ. Timber and grass. Extreme fire behavior. Running, torching and spotting. Structures threatened. Evacuations in effect.

Miller, Gila NF. IMT 2 (Pierson). Twenty-five miles north of Silver City, NM. Timber and grass. Minimal fire activity.

Bear, Cimarron District, New Mexico State Forestry. IMT 2 (Richardson). IMT is also managing the Purgatoire fire (Rocky Mountain Area). Twenty miles northeast of Raton, NM. Timber and grass. Active fire behavior. Structures threatened.

Murphy, Coronado NF. Five miles east of Arivaca, AZ. Grass. Active fire behavior.

* **Empire 2**, Safford District, BLM. Started on private land ten miles north of Sonoita, AZ. Grass. Moderate fire activity.

Incident Name	St	Unit	Size	Size Chge 24 Hrs	% Ctn	Est Ctn	Totl Pers	Pers Chge 24 Hrs	Crw	Eng	Heli	Strc Lost	\$\$ CTD	Origin Own
Horseshoe 2	AZ	CNF	80,500	7,600	75	6/22	835	-96	18	38	8	0	23M	FS
Wallow	AZ	ASF	18,000	15,385	0	UNK	601	183	16	14	6	0	1.8M	FS
Miller	NM	GNF	88,835	8	90	7/15	364	22	8	1	4	4	12.9M	FS
Bear	NM	N2S	6,885	1,875	40	6/11	351	-14	12	9	4	2	619K	ST
Murphy	AZ	CNF	7,800	7,500	5	6/7	197	116	12	10	2	0	203K	FS
* Empire 2	AZ	SAD	611	---	50	6/2	54	---	1	9	2	0	75K	BLM

Alaska Area (PL 3)

New fires: 8
 New large fires: 0
 Uncontained large fires: 4
 Type 2 IMTs committed: 1

East Volkmar, Delta Area, Alaska DOF. IMT2 has been ordered. Twenty-five miles northeast of Delta Junction, AK. Black spruce. Active fire behavior. Structures threatened.

Hastings, Fairbanks Area, Alaska DOF. IMT 2 (Allen). Fifteen miles northwest of Fairbanks, AK. Timber. Active fire behavior. Structures threatened.

Tatalina, Tanana Zone, BLM. Twenty-nine miles northwest of Fairbanks, AK. Hardwood slash and brush. Active fire behavior with running and group torching.

Francis Creek, Fairbanks Area, Alaska DOF. Two miles east of Healy, AK. Mixed hardwoods and brush. No new information. Last report unless new information is received.

Little Creek, Tanana Zone, BLM. Thirty-six miles south of Tanana, AK. Hardwood slash, brush and tundra. Creeping, backing and torching. Last report unless significant activity occurs.

Incident Name	St	Unit	Size	Size Chge 24 Hrs	% Ctn	Est Ctn	Totl Pers	Pers Chge 24 Hrs	Crw	Eng	Heli	Strc Lost	\$\$ CTD	Origin Own
East Volkmar	AK	DAS	39,000	17,000	1	6/15	211	7	9	0	4	0	1.7M	ST
Hastings	AK	FAS	5,434	4,634	0	UNK	334	232	18	0	0	2	675K	ST

Tatalina	AK	TAD	1,806	250	0	UNK	82	2	4	0	0	0	NR	BLM
Francis Creek	AK	FAS	2,020	---	80	UNK	12	---	1	0	0	0	467K	ST
Little Creek	AK	TAD	5,000	2,000	N/A	N/A	32	23	1	0	0	0	140K	BLM

Rocky Mountain Area (PL 1)

New fires: 3
 New large fires: 0
 Uncontained large fires: 1

Purgatoire, Las Animas County. Twenty-five miles southeast of Hoehne, CO. Pinyon pine, juniper and brush. Active fire with group tree torching.

Incident Name	St	Unit	Size	Size Chge 24 Hrs	% Ctn	Est Ctn	Totl Pers	Pers Chge 24 Hrs	Crw	Eng	Heli	Strc Lost	\$\$ CTD	Origin Own
Purgatoire	CO	LSX	6140	540	60	6/6	93	9	4	3	0	0	116K	CNTY

Predictive Services Discussion: Strong winds of 25 to 35 mph and low relative humidity in the lower teens will produce critical fire weather conditions across parts of southern Utah, western New Mexico and eastern Colorado. A trough over the west coast will move across the Great Basin, producing scattered showers and thunderstorms over the Northwest and the northern Rockies. A warm front in the northern Plains will send rain and a few thunderstorms through the Upper Midwest. In Alaska, low pressure in the Aleutians will bring showers to the western interior and the southwest. Humidity will slowly increase in the central and eastern interior.

Predictive Services Outlook products: <http://www.predictiveservices.nifc.gov/outlooks/outlooks.htm>



Today's discussion is from the
Hazard Tree Category.

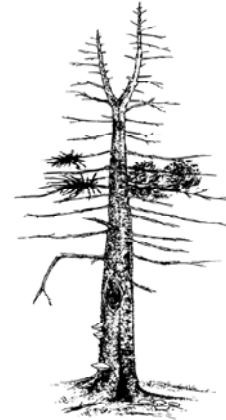
HAZARD TREE FELLING – TIPS #1

Felling a hazard tree requires accurate risk assessment and complexity analysis, and demands the sawyer's full situational awareness. In all cases, remember to establish and maintain a secure felling area.

Do not bypass hazard trees without taking some action such as felling or establishing a No-Work-Zone.

Degree of hazard varies with tree size, species, and type/location of defect:

- Stem defects resulting in tree failure, i.e., collapse;
- Weakened sapwood resulting in loss of control when falling trees & limits solid wood for wedging;
- Overhead hazards, i.e., dead or hanging limbs falling on the faller.



Indicators of potential felling hazards:

- **Dead Limbs:** limbs of all sizes and species with decay evident cracking, or loose hung-up limbs. Avoid working under overhead hazards.
- **Witches Broom:** caused by mistletoe infection, limbs can grow very large and heavy (200+ lbs).
- **Split Trunk:** cracked trunk from frost, lightning or wind. Visible evidence of advanced decay indicates serious weakness where the tree could fail.
- **Stem Damage:** caused by windfall scarring, fire, machine, and animal damage, as well as heart rot diseases.
- **Thick Sloughing Bark or Sloughing Sapwood:** usually found on dead trees. Loose bark on Douglas fir or loose sapwood on wind snapped cedars can dislodge during falling.
- **Butt and Stem Cankers:** usually found on deciduous trees but can occur on Douglas fir and pine. The infected areas weaken the stem.
- **Fungal Fruiting Bodies or Conks:** found on stems may indicate massive interior rot 1 – 2 yards above and below conk. Excessive resinosis (resin flow) also indicates heart or root diseases.
- **Heavy Tree Lean:** may be caused by damaged roots or lifting root mats, shallow or wet soils. In some cases, the tree may have corrected itself which can be determined by looking for corrected top growth.
- **Root Condition:** look for any ground cracks around the base of the tree, signs of decay or fungal conks on the roots.
- **Cat Face:** look for enough solid wood to construct an effective undercut and back cut.

References: [Hazard Tree Safety Web Page](#)

Have an idea? Have feedback? Share it.

[ONLINE](#) | MAIL: 6 Minutes For Safety Task Group • 3833 S. Development Ave • Boise, ID 83705 | FAX: 208-387-5250

[6 Minutes Home](#)

Fires and Acres Yesterday

AREA		BIA	BLM	FWS	NPS	ST/OT	USFS	TOTAL
Alaska	FIRES		2	0	1	5		8
	ACRES		9,286	7,548	850	17,718		35,402
Northwest	FIRES							0
	ACRES							0
Northern California	FIRES							0
	ACRES							0
Southern California	FIRES					17		17
	ACRES					25		25
Northern Rockies	FIRES							0
	ACRES							0
Eastern Great Basin	FIRES							0
	ACRES							0
Western Great Basin	FIRES							0
	ACRES							0
Southwest	FIRES		1			1	3	5
	ACRES		611			2	8,909	9,522
Rocky Mountain	FIRES					3		3
	ACRES					3,788		3,788
Eastern Area	FIRES					7	4	11
	ACRES					4	1	5
Southern Area	FIRES				2	89	5	96
	ACRES				0	6,312	13	6,325
TOTAL	FIRES	0	3	0	3	122	12	140
	ACRES	0	9,897	7,548	850	27,849	8,923	55,067

Fires and Acres Year-to-Date

AREA		BIA	BLM	FWS	NPS	ST/OT	USFS	TOTAL
Alaska	FIRES		13	7	2	246	1	269
	ACRES		26,558	28,636	860	83,423	0	139,477
Northwest	FIRES	1	6			19	5	31
	ACRES	0	9			43	0	52
Northern California	FIRES			3	3		24	30
	ACRES			0	2,076		4	2,080
Southern California	FIRES	2	130	3		692	78	905
	ACRES	1	991	1		3,239	1,350	5,582
Northern Rockies	FIRES	87		4	1	41	17	150
	ACRES	261		49	6	240	23	579
Eastern Great Basin	FIRES		35	1		29	2	67
	ACRES		30	26		204	5	265
Western Great Basin	FIRES	1	38	2	8	8	1	58
	ACRES	10	33	12	0	99	0	154
Southwest	FIRES	399	115	7	10	450	257	1,238
	ACRES	5,295	63,428	181	112	391,527	253,121	713,664
Rocky Mountain	FIRES	161	14	21	2	204	65	467
	ACRES	2,999	24	3,422	2,269	150,087	21,606	180,407
Eastern Area	FIRES	335		20	12	2,648	178	3,193
	ACRES	353		2,577	70	23,514	14,031	40,545
Southern Area	FIRES	203		191	48	21,436	488	22,366
	ACRES	11,287		40,625	45,024	1,966,144	20,649	2,083,729
TOTAL	FIRES	1,189	351	259	86	25,773	1,116	28,774
	ACRES	20,206	91,073	75,529	50,417	2,618,520	310,789	3,166,534

Ten Year Average Fires	31,592
Ten Year Average Acres	1,136,971

*** Changes in some agency YTD acres reflect more accurate mapping or reporting adjustments. ***

Prescribed Fires and Acres Yesterday

AREA		BIA	BLM	FWS	NPS	ST/OT	USFS	TOTAL
Alaska	FIRES							0
	ACRES							0
Northwest	FIRES							0
	ACRES							0
Northern California	FIRES				0		5	5
	ACRES				1		22	23
Southern California	FIRES						0	0
	ACRES						1	1
Northern Rockies	FIRES						0	0
	ACRES						2	2
Eastern Great Basin	FIRES							0
	ACRES							0
Western Great Basin	FIRES							0
	ACRES							0
Southwest	FIRES							0
	ACRES							0
Rocky Mountain	FIRES							0
	ACRES							0
Eastern Area	FIRES							0
	ACRES							0
Southern Area	FIRES							0
	ACRES							0
TOTAL	FIRES	0	0	0	0	0	5	5
	ACRES	0	0	0	1	0	25	26

Prescribed Fires and Acres Year-to-Date

AREA		BIA	BLM	FWS	NPS	ST/OT	USFS	TOTAL
Alaska	FIRES			1		11		12
	ACRES			20		5,715		5,735
Northwest	FIRES	1	34	3	1		85	124
	ACRES	1,152	5,342	245	42		4,033	10,814
Northern California	FIRES	9	16	8	17		103	153
	ACRES	52	381	18,196	134		3,324	22,087
Southern California	FIRES		7	10		2	60	79
	ACRES		580	1,963		16	1,541	4,100
Northern Rockies	FIRES	38	12	32	1	13	83	179
	ACRES	1,387	653	6,549	141	211	3,671	12,612
Eastern Great Basin	FIRES	0	12	3	1	34	21	71
	ACRES	54	1,845	1,023	55	695	4,624	8,296
Western Great Basin	FIRES		4	1		2	9	16
	ACRES		121	550		64	296	1,031
Southwest	FIRES	15	25	3	3		79	125
	ACRES	1,691	191,660	1,428	45		75,407	270,231
Rocky Mountain	FIRES	38	31	89	17	45	119	339
	ACRES	4,664	6,877	14,174	4,703	7,932	29,567	67,917
Eastern Area	FIRES	29		472	21	757	125	1,404
	ACRES	60,253		32,289	3,780	47,282	38,990	182,594
Southern Area	FIRES	39		138	15	1,155	634	1,981
	ACRES	7,632		66,190	10,082	232,666	603,005	919,575
TOTAL	FIRES	169	141	760	76	2,019	1,318	4,483
	ACRES	76,885	207,459	142,627	18,982	294,581	764,458	1,504,992

*** Changes in some agency YTD acres reflect more accurate mapping or reporting adjustments. ***

Additional wildfire information is available through the Geographic Areas at <http://gacc.nifc.gov/>.

Canada Fires and Hectares

Provinces	Fires Yesterday	Hectares Yesterday	Fires Year-To-Date	Hectares Year-To-Date
British Columbia	4	78	113	450
Yukon Territory	5	7,015	26	12,822
Alberta	6	22,042	537	464,063
Northwest Territory	3	8	13	17
Saskatchewan	4	496	158	4,134
Manitoba	1	0	43	93
Ontario	8	2	173	1,463
Quebec	1	0	65	949
Newfoundland	0	0	17	66
New Brunswick	2	0	49	30
Nova Scotia	0	0	90	128
Prince Edward Island	0	0	1	1
National Parks	0	0	12	16,650
Total	34	29,641	1,297	500,866

This report contains information derived from the National Fire and Aviation Management Web Applications (FAMWEB) system and other sources to provide relative information about emerging and ongoing incident activity. This information is considered operational in nature, is subject to correction, and therefore may not match official year to date agency records.

**** National Interagency Coordination Center ****